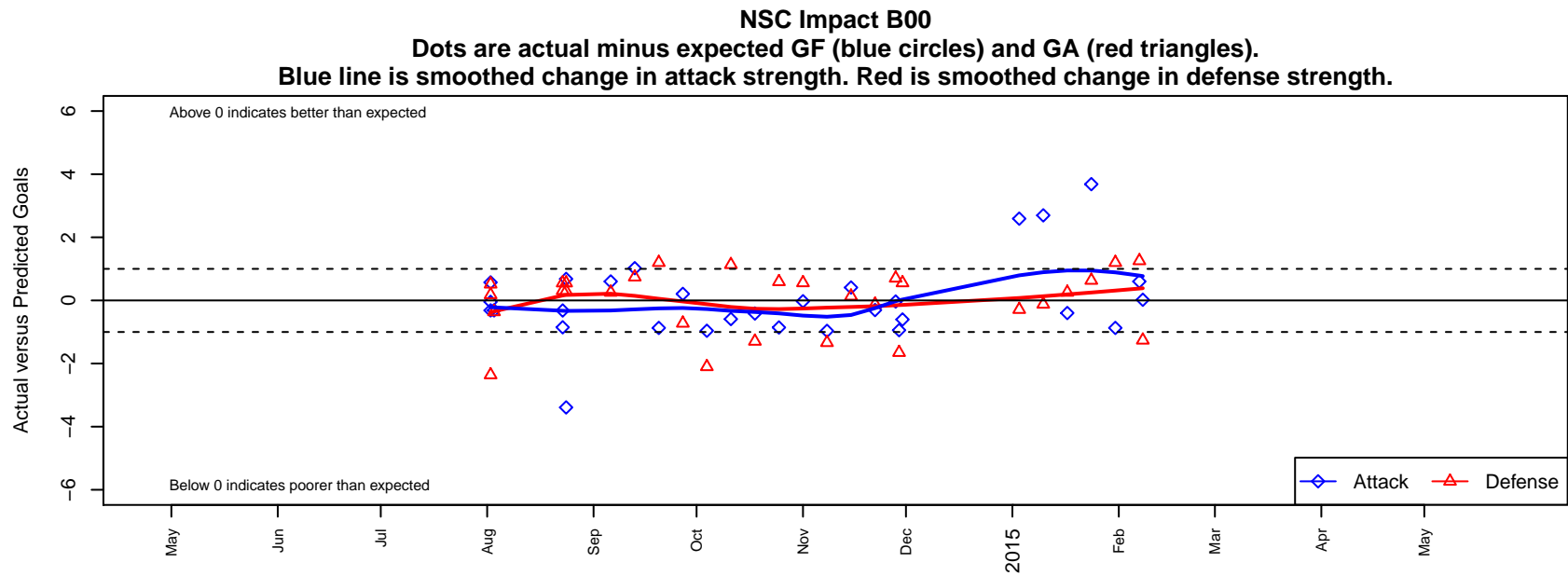


NSC Impact B00

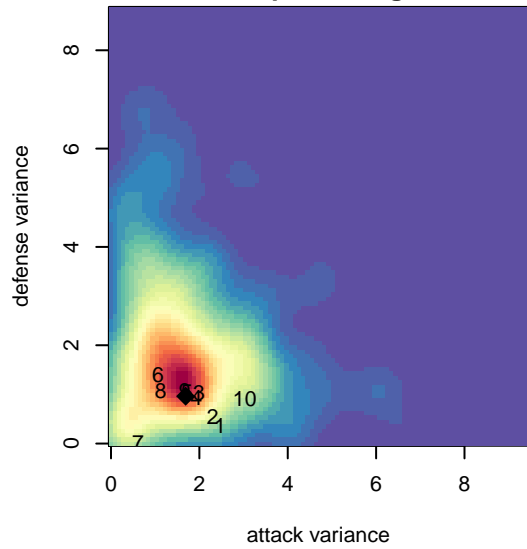
Northshore SC
Woodinville, WA
B00 total strength=1179
attack=4.13 defense=3.34
fall league = NPSL B14D1

alt names used:
NSC Impact B00
NSC Impact

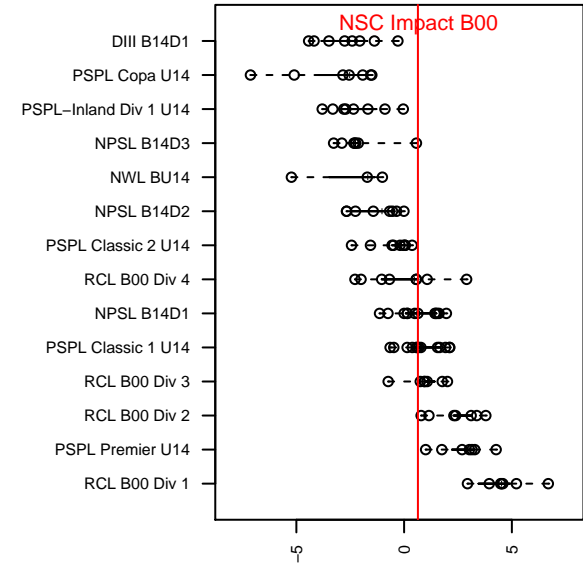
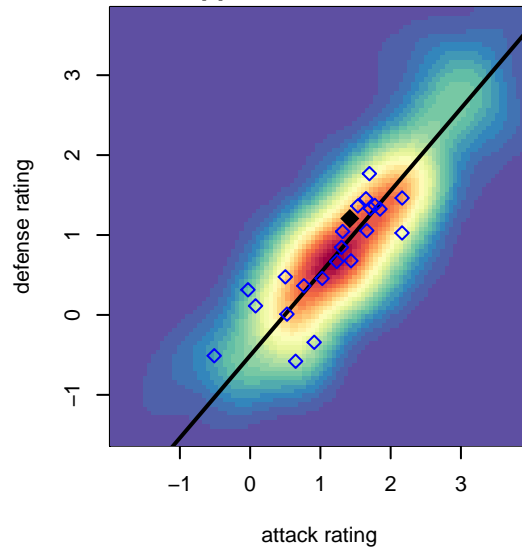
Venues played:
2014 Strawberry Classic BU14-15
2014 Sky River BU14
2014 NPSL B14D1
2014 Cranberry Cup U14-15
2014 Founders Cup B00



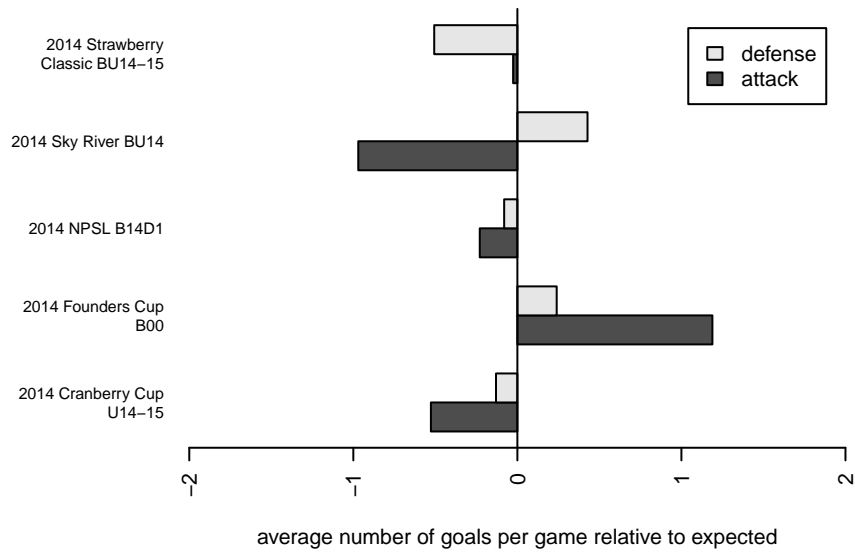
**attack and defense variance (black dot)
relative to other teams
and top 10 in region**



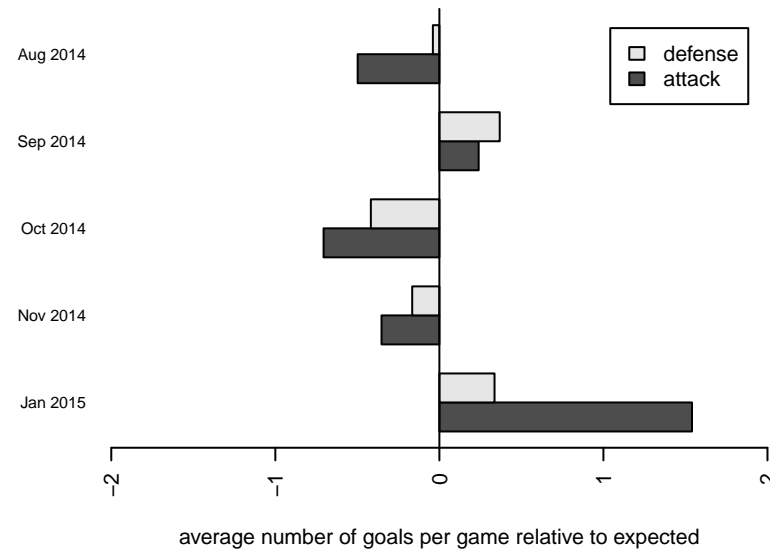
**attack and defense rating
relative to others at age
and all opponents in last 13 months**



Performance relative to 13 month average



Performance relative to 13 month average



date	home		away		venue	pred.home	pred.away
2015-02-08	Crossfire Select Button B00	3	NSC Impact B00	1	2014 Founders Cup B00	1.74	0.98
2015-02-07	NSC Impact B00	2	Crossfire Select Greenwalt B00	0	2014 Founders Cup B00	1.40	1.26
2015-01-31	Storm King B00	0	NSC Impact B00	1	2014 Founders Cup B00	1.20	1.87
2015-01-24	NSC Impact B00	10	Seattle United Shoreline White B00	0	2014 Founders Cup B00	6.32	0.64
2015-01-17	NSC Impact B00	1	Crossfire Select Greenwalt B00	1	2014 Founders Cup B00	1.40	1.26
2015-01-10	Seattle United W Blue B00	1	NSC Impact B00	5	2014 Founders Cup B00	0.88	2.30
2015-01-03	NSC Impact B00	8	PSA Force Black B00	1	2014 Founders Cup B00	5.41	0.71
2014-11-30	NSC Fusion B99	1	NSC Impact B00	0	2014 Cranberry Cup U14-15	1.56	0.60
2014-11-29	NSC Thunder B99	3	NSC Impact B00	0	2014 Cranberry Cup U14-15	1.35	0.94
2014-11-28	NSC Impact B00	2	Fuerza FC Academy B00	1	2014 Cranberry Cup U14-15	2.03	1.70
2014-11-22	Seattle United W Blue B00	1	NSC Impact B00	2	2014 NPSL B14D1	0.88	2.30
2014-11-15	NSC Impact B00	2	Seattle United S Black B00	1	2014 NPSL B14D1	1.59	1.13
2014-11-08	NSC Impact B00	0	Seattle United NE Blue B00	3	2014 NPSL B14D1	0.97	1.66
2014-11-01	Nortac Colibri B00	2	NSC Impact B00	1	2014 NPSL B14D1	2.56	1.03
2014-10-25	NSC Impact B00	0	Kent United Green B00	1	2014 NPSL B14D1	0.86	1.59
2014-10-18	NSC Impact B00	2	Seattle United Shoreline Blue B00	2	2014 NPSL B14D1	2.41	0.70
2014-10-11	Seattle United S Black B00	0	NSC Impact B00	1	2014 NPSL B14D1	1.13	1.59
2014-10-04	Seattle United S Gold B00	4	NSC Impact B00	0	2014 NPSL B14D1	1.90	0.96
2014-09-27	NSC Impact B00	2	Seattle United S Blue B00	2	2014 NPSL B14D1	1.79	1.28
2014-09-20	Storm King B00	0	NSC Impact B00	1	2014 NPSL B14D1	1.20	1.87
2014-09-13	Crossfire Select Button B00	1	NSC Impact B00	2	2014 NPSL B14D1	1.74	0.98
2014-09-06	NSC Impact B00	2	Crossfire Select Greenwalt B00	1	2014 NPSL B14D1	1.40	1.26
2014-08-24	Sky River Select B00	0	NSC Impact B00	0	2014 Sky River BU14	0.29	3.39
2014-08-24	NSC Impact B00	3	Crossfire Select Merrick B00	0	2014 Sky River BU14	2.32	0.55
2014-08-23	NSC Impact B00	2	Gala FC B00	0	2014 Sky River BU14	2.85	0.31
2014-08-23	Crossfire Select Merrick B00	0	NSC Impact B00	2	2014 Sky River BU14	0.55	2.32
2014-08-03	San Carlos Chivas B00	3	NSC Impact B00	1	2014 Strawberry Classic BU14-15	2.64	1.32
2014-08-02	NSC Impact B00	1	San Carlos Chivas B00	5	2014 Strawberry Classic BU14-15	1.32	2.64

date	home		away		venue	pred.home	pred.away
2014-08-02	FWFC Sounders B99	0	NSC Impact B00	7	2014 Strawberry Classic BU14-15	0.18	6.43
2014-08-02	Newport FC Cosmos B00	0	NSC Impact B00	4	2014 Strawberry Classic BU14-15	0.52	4.04